



Wet paint lines

Every wet paint line is different

Our wet paint lines are all custom designed and thus different from each other.

Regardless of your requirements, we can guide you to the very best and most efficient solution ensuring:

- Thorough and precise layout planning
- Optimum workflow
- An optimal pretreatment
- Optimal energy efficient work environment
- The most energy efficient solution through optimization and energy recovery

Contact us and find out which solution is the best for your operation.



Energy efficient and environmentally friendly solutions

The manufacturing industry is under an increased pressure from the market and their customers to have an environmentally sustainable operation.

For the surface treatment process which represents e.g. a significant amount of energy consumption, it means that initiatives such as optimization, energy recovery, and lowering the CO2 emissions in your line also have become increasingly more important.

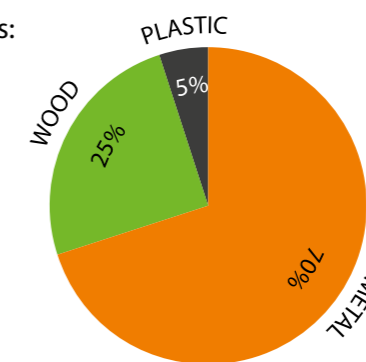
At the AABO-IDEAL wet paint expert center, our very experienced and knowledgeable staff will guide you to the best solution for your business.

Why wet paint?

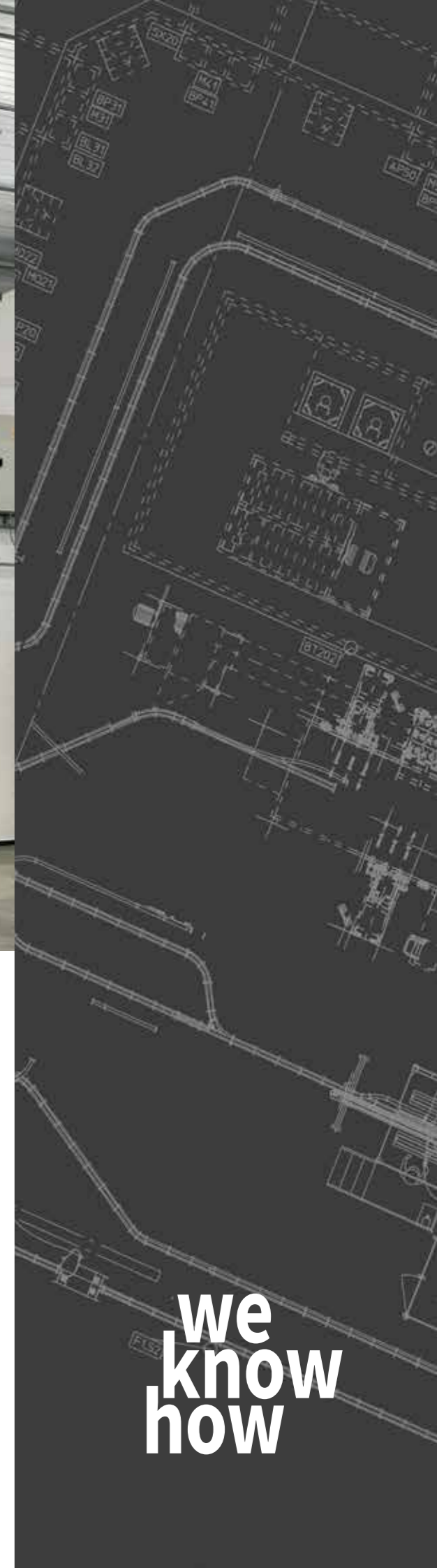
The choice of a wet paint line is primarily based on the type of goods and surface requirements:

- The corrosion requirements
- The finish requirements
- The thickness of the goods
- The complexity of the goods
- The temperature sensibility

AABO-IDEAL Group has had the privilege to work with and supply wet paint lines to a range of different industries, and here you can see the breakdown by materials:



**we
know
how**





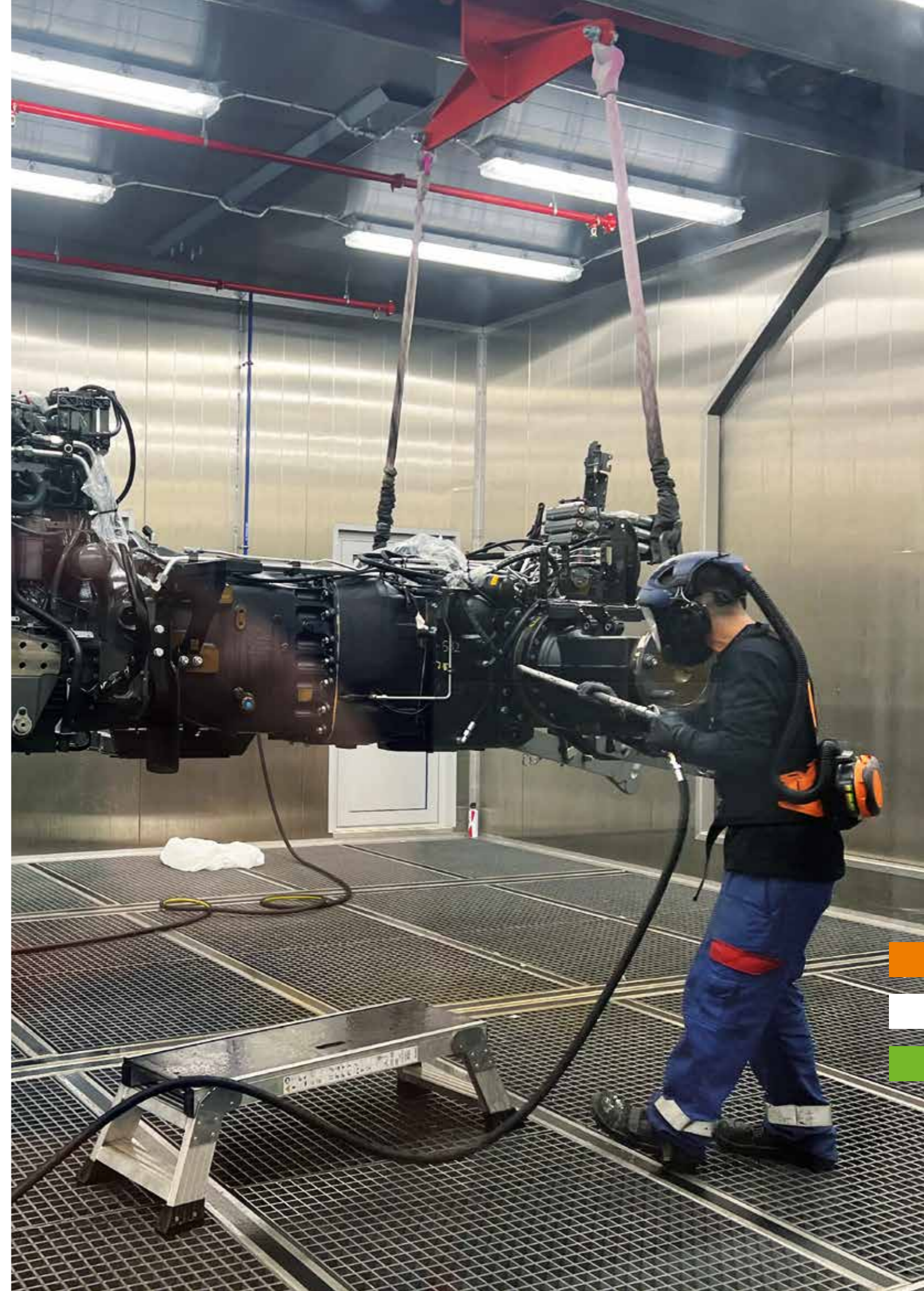
Planning the wet paint line

When planning a wet paint line, there are several important factors to consider. We have listed below the key considerations giving the best solution both short and long term.

Working with us, we will make our extensive experience and know-how available to you, and guide you through the planning phase, creating an efficient wet paint line that meets the production requirements while ensuring high quality, safety, and environmental compliance.

Flexibility of you line is a given with us since we always plan ahead and make sure you will be able to expand when needed.

- | | | |
|--|--|---|
| <ul style="list-style-type: none"> ■ Application principle
Spray
Dip ■ Type of function
Manual
Automatic
Robot operated ■ Spray booths
Dry filtration
Wet filtration | <ul style="list-style-type: none"> ■ Flash-off
Temperature management
Humidity control
Time and temperature ■ Drying and curing
Time
Temperature
Ventilation
Humidity control ■ Ventilation
Air volume
Air speed, requirements
ATEX
Humidification
Dehumidification
Heat recovery
Air conditioning | <ul style="list-style-type: none"> ■ Conveyor systems
P&F
Manual conveyor
Single conveyor
Roller conveyor
Friction conveyor ■ Pretreatment
Washing
Sandblasting
Laser cleaning ■ In general
Classification plan
regarding explosion
and fire hazard areas |
|--|--|---|





Painting booth - air handling solutions

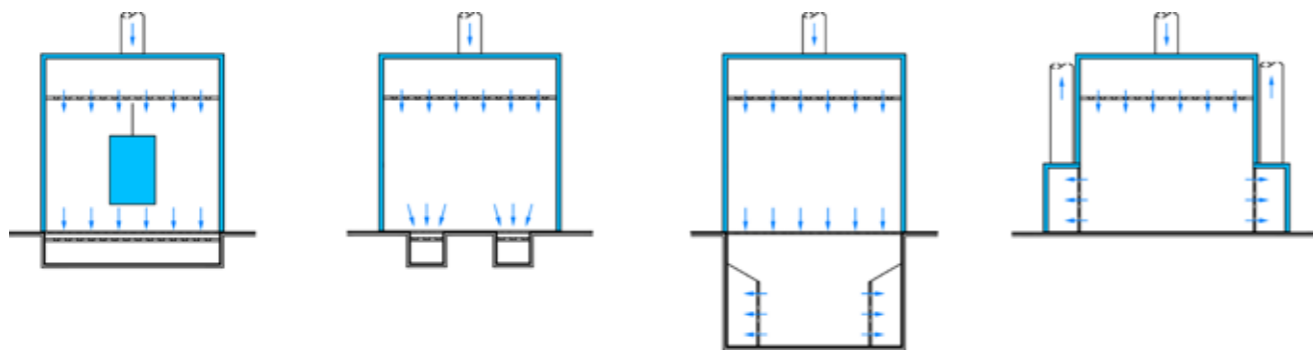
Optimum air handling is important for both results and the working environment.

We make an analysis to find the best performing solution for your wet paint line.

ATEX and CE certification: We design and project, of course, according to current EU norms and standards.



Examples of ventilation of painting booths



Down draft

Down draft,
goods on wagon
or rails

Down draft

Down draft,
wall exhaust





Paint filters

CI Filters are available in a wide range of types and configurations for the filtration of different paints and other materials, and are available e.g., on rolls, in cubes, in cassettes, on pads etc. The filters are made from several layers of UL Class 2 tested material and function according to the baffle principle, whereby air passes through successive layers.

Filters are distributed by AABO-IDEAL in SE, NO and SF only.



Manual dry filter booths

Our manual dry filter booths are designed for the spray painting or grinding of small parts that are easy to take in and out of the cabinet.

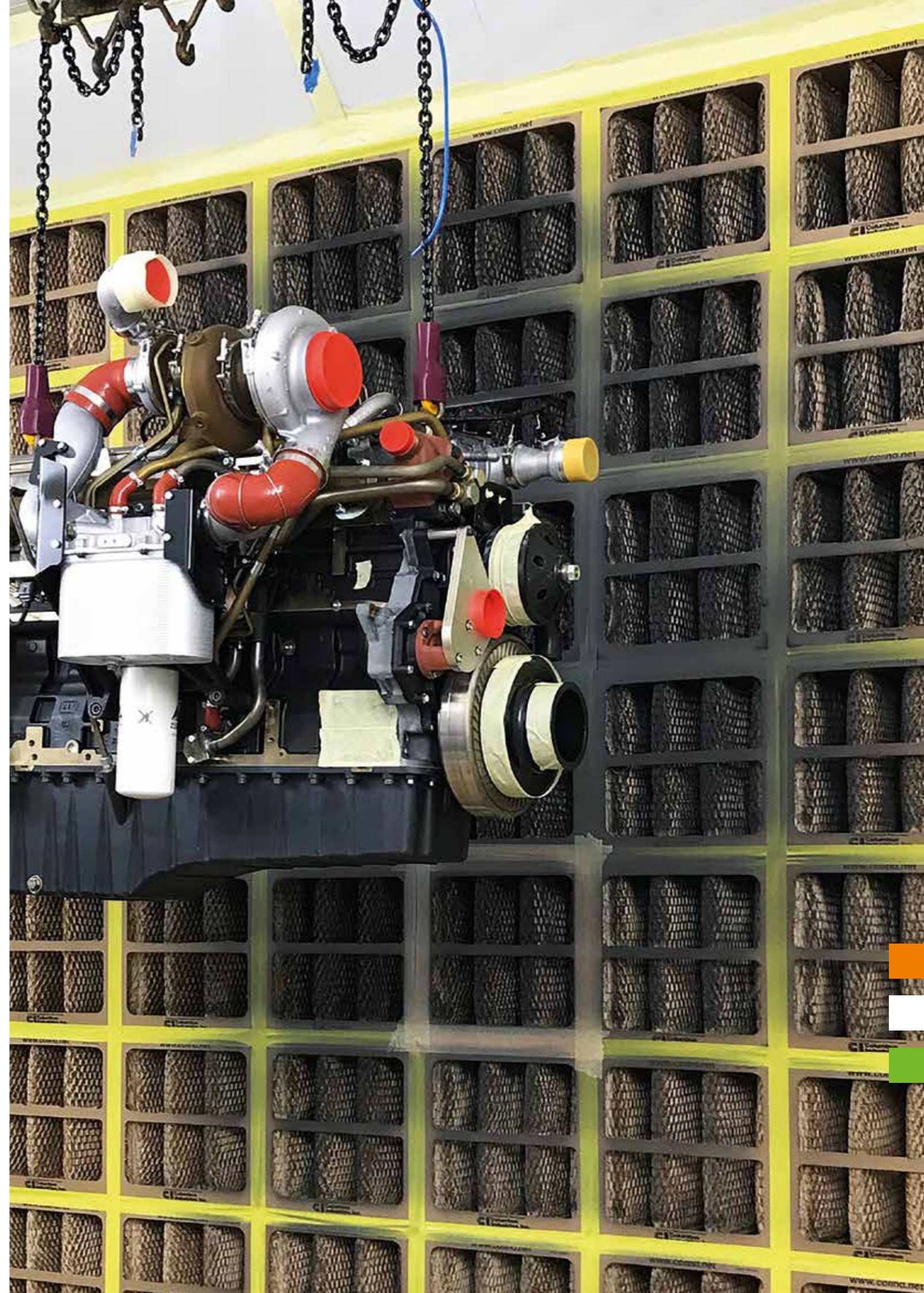
They come in various sizes to fit almost any requirement for spraying or grinding items and goods.



Cleaning booths

Our cleaning booths provide a well-ventilated work area for cleaning spray guns, pumps and nozzles. The cleaning booths are also suitable for mixing small amounts of paint and thereby avoiding widespread dispersal of solvents throughout the premises.

The booths are available for various purposes, and in different sizes.





Service and spare parts

AABO-IDEAL Group is a complete supplier: We develop, produce, and sell finishing systems.

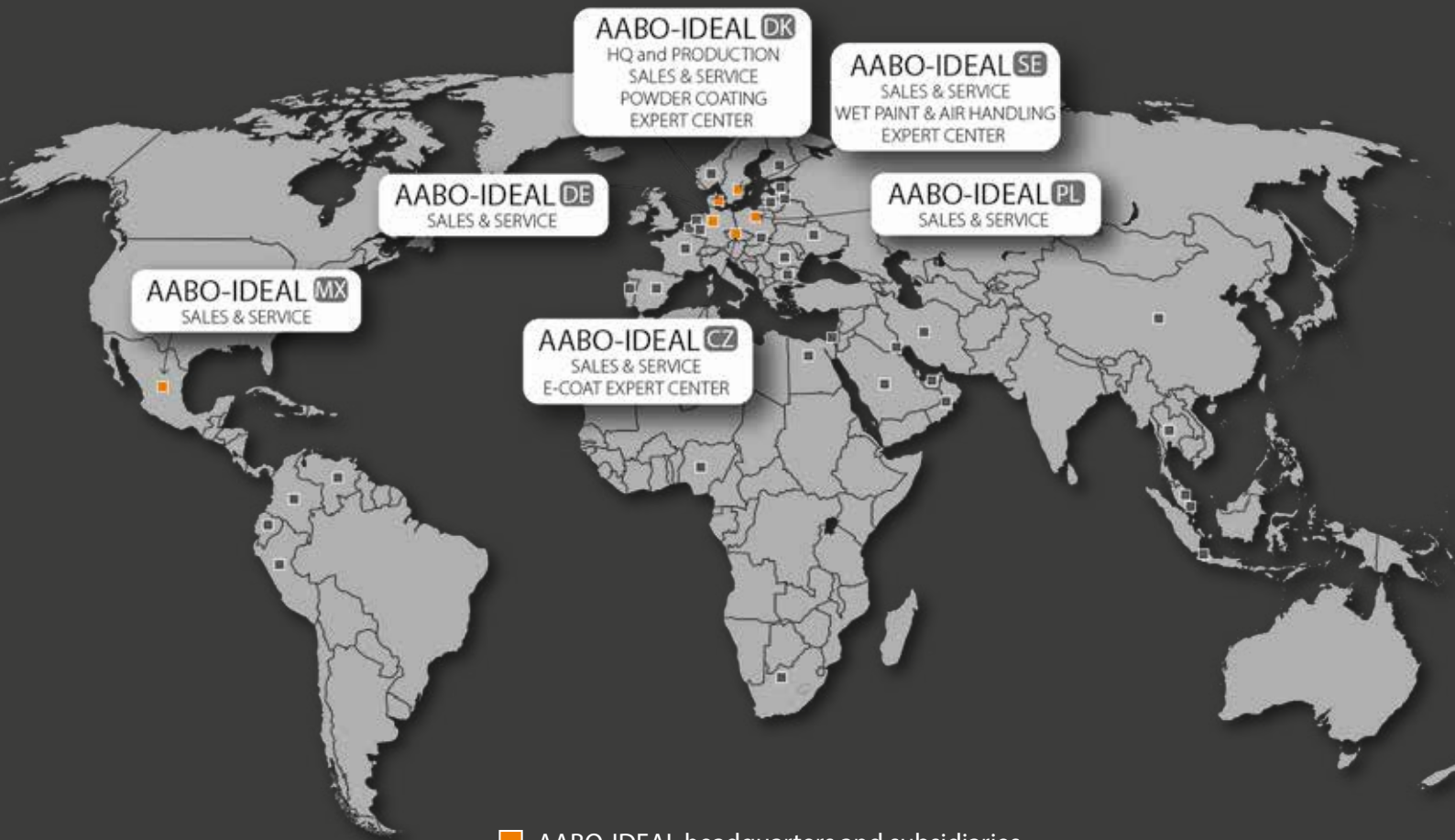
On top of that, we service our systems and components, and we have a strong worldwide service set-up, providing the best expert support to our customers.

We fully understand that a breakdown must be avoided in the first place and remedied very quickly if it occurs. Our trained expert service engineers are always at hand to provide fast and efficient support.

If the standard maintenance performed by your staff is no longer sufficient, we can offer you an additional maintenance agreement containing regular service check-ups to avoid costly stops and breakdowns.

Read more about our Service & After Sales Department on our website: www.aabo-ideal.com.





- AABO-IDEAL headquarters and subsidiaries
- AABO-IDEAL agents

Represented world wide



AABO  IDEAL
GROUP

AABO-IDEAL A/S | Industrivej 7 | DK-5600 Faaborg
+45 6261 6125 | info@aabo-ideal.com | www.aabo-ideal.com